

MUNIBE (Ciencias Naturales)	41	79-80	SAN SEBASTIAN	1989-1990	ISSN 0027 - 3414
-----------------------------	----	-------	---------------	-----------	------------------

Recibido: 10-VII-90

## Lectotypification of *Lithodora prostrata* (Loisel.) Griseb. (Boraginaceae)

KEY WORDS: *Lithodora*, Lectotypification.

C. AEDO\*  
I. AIZPURU\*\*  
P. CATALAN\*\*

### SUMMARY

In this paper a lectotypus for *Lithodora prostrata* (Loisel.) Griseb is designated from the LOISELEUR-DESLONGCHAMPS herbarium (JLA).

### LABURPENA

LOISELEUR-DESLONGCHAMPS (JLA) herbarioan dagoen materialean oinarrituz, *Lithodora prostrata* (Loisel.) Griseb-ren lektotipoa izendatzen da.

### INTRODUCTION

In 1806, Lagasca described his *Lithospermum diffusum* based on materials gathered at Pajares Mountain Pass surroundings, in the Cantabrian Mountain Chain (NW of the Iberian Peninsula). Almost at the same time, Loiseleur published his *Flora Gailica* (1806), where he described his *Lithospermum prostratum* upon materials from the Bayonne vicinity (SW of France). Since then, these species—now in the genus *Lithodora*—have suffered several vicissitudes.

JOHNSTON (1924) proposed to join both under Lagasca's epithet, which was the earlier one. The same classification was adopted by FERNANDES (1972). Recently VALDES (1981), in a clarifying taxonomic work, found morphological differences between these taxa and argued in favour of their separation at specific level; this author appointed the lectotypus for *Lithodora diffusa* (Lag.) Johnston (MA 96526). So, up to now, the lectotypification of *Lithodora prostrata* (Loisel.) Griseb. was lacking.

### LECTOTYPIFICATION OF *LITHODORA PROSTRATA*

We found the material that Loiseleur used to describe his species in the JLA Loiseleur-Deslongchamps Herbarium, now located in the Requien Museum (Histoire Naturelle) of Avignon. There were two sheets from the type locality and we hereby designate as lectotypus the single specimen of the first one, which is the more complete of the two (fig. 1), labelled, without any number, as follows: «*Lithospermum prostratum* Lois. // Sur le bord des chemins et dans / les landes aux environs de / Bayonne, 3 juin 1803» (m. Loiseleur).

The second sheet represents an lectoparatypus.

### COMMENTS

*Lithodora diffusa* is an endemic plant from the Cantabrian Mountain Chain. Its most eastern locality is further than 100 km. from the locus classicus of *L. prostrata*.

*Lithodora prostrata* is widespread throughout the Atlantic side of SW Europe, from France to Portugal, and in the North of Morocco; in its southern distribution area it is represented by subsp. *lusitanica* (Samp.) Valdés.

We ascertained the homogeneity of the plants in the Cantabrian coastal area, verifying the main differential diagnostic character between them: stemens at the same or at different heights in the corolla tube.

\* Universidad de Cantabria. Dpto. de Geografía, Urbanismo y Ordenación del Territorio. Avda. de los Castros s/n. 39005 Santander (Spain).

\*\* Arantzi Zientzi Elkartea. Pza. I. Zuloaga (Museo). 20003 Donostia (Spain).

The chromosome number seems to have no taxonomic value in this group. All *L. diffusa* counts are diploids ( $2n=16$ ) (cf. LUQUE & VALDES (1984)), while both diploid ( $2n=16$ ) (cf. LUQUE & VALDES (l.c.)) and tetraploid levels have been found in *L. prostrata* subsp. *prostrata* (cf. LUQUE & VALDES (l.c.)), GONZALEZ & ELENA (1985) and only tetraploids in subsp. *lusitanica* (cf. FERNANDES & LEITAO (1972), LUQUE & VALDES (l.c.)). Chromosome counts done *L. prostrata* subsp. *prostrata* plants collected in Basque localities close to the locus *classicus* have given us diploid results ( $n=8$ ) (fig.2).

### ACKNOWLEDGEMENTS

We wish to thank Dr. M. LUCEÑO and Prof. C. A. STACE for their caryologic and taxonomic help, respectively.

### REFERENCES

FERNANDES, R.

- 1977 *Lithodora* Griseb. in Tutin & al. (eds.) *Flora Europaea III*: 88-89. Cambridge.

FERNANDES, A. & M.T. LEITAO

- 1972 Contribution à la connaissance cytotaxonomique des Spermatopyta du Portugal V. *Boraginaceae*. *Bol. Soc. Brot. Sér. 2*, 46:389-405.

GONZALEZ, M.A. & J.A. ELENA

- 1985 Contribución al conocimiento cariológico de los brezales del centro-occidente español. *Studia Botanica* 4:173-177.

JOHNSTON, I.M.

- 1924 Studies in the boraginaceen I. *Mitt. Bot. München VII*: 277-294.

LUQUE, T. & B. VALDES

- 1984 Karyological studies on Spanish Boraginaceae: *Lithospermum* L. sensu lato. *Bot. Journ. Linn. Soc.* 88:335-350.

VALDES, B.

- 1981 Notas sobre boragináceas españolas. I. *Lithodora prostrata* (Loisel.) Griseb. y *L. diffusa* (Lag.) I.M. Johnston. *Bol. Soc. Brot. Sér. 2*, 53(2):1331-1340.

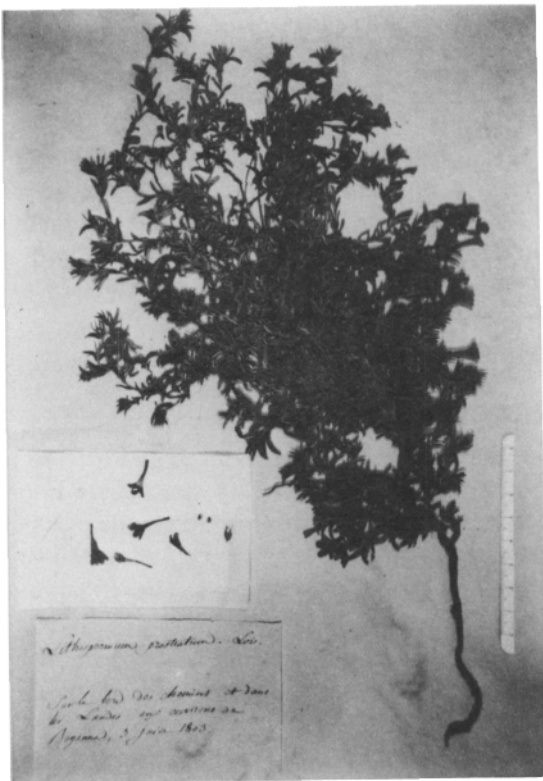


Fig. 1.— Lectotypus of *Lithospermum prostratum* Loisel. (Avignon. Herb. LOISELEUR DESLONGCHAMPS).

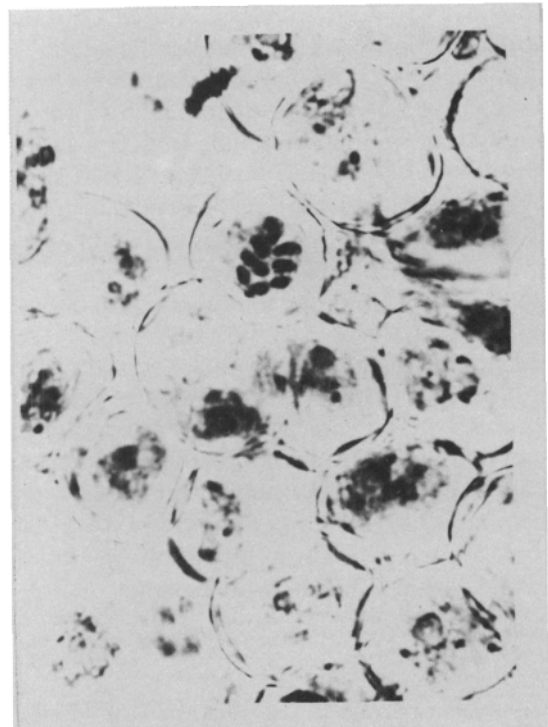


Fig. 2.— Pollen grain mitosis in *Lithodora prostrata* subsp. *prostrata* (near Bayonne, ARAN 142.88).  $n = 8$  (x2000).